

Freshford House, 3, Grange Road
Weymouth, DT4 7PQ



£1,200 PCM



Freshford House, 3, Weymouth, DT4 7PQ

- Immaculately Presented Throughout
- Brand New Kitchen
- Modern Bathroom
- Generous Main Bedroom
- Bonus room / Study
- Allocated Parking
- Available Now
- Long Term Let
- Short Stroll To Town Centre
- Moments from Greenhill Beach





Welcome to Freshford House, a delightful apartment located just moment away from Greenhill Beach. The property has just been renovated throughout, with a brand new kitchen, bathroom and flooring.

The open plan living space is the perfect place to relax and unwind, allowing you to seamlessly flow between the lounge, dining area and the kitchen. For those who enjoy entertaining, the room allows you to cook and serve guests without keeping you away from the conversation.

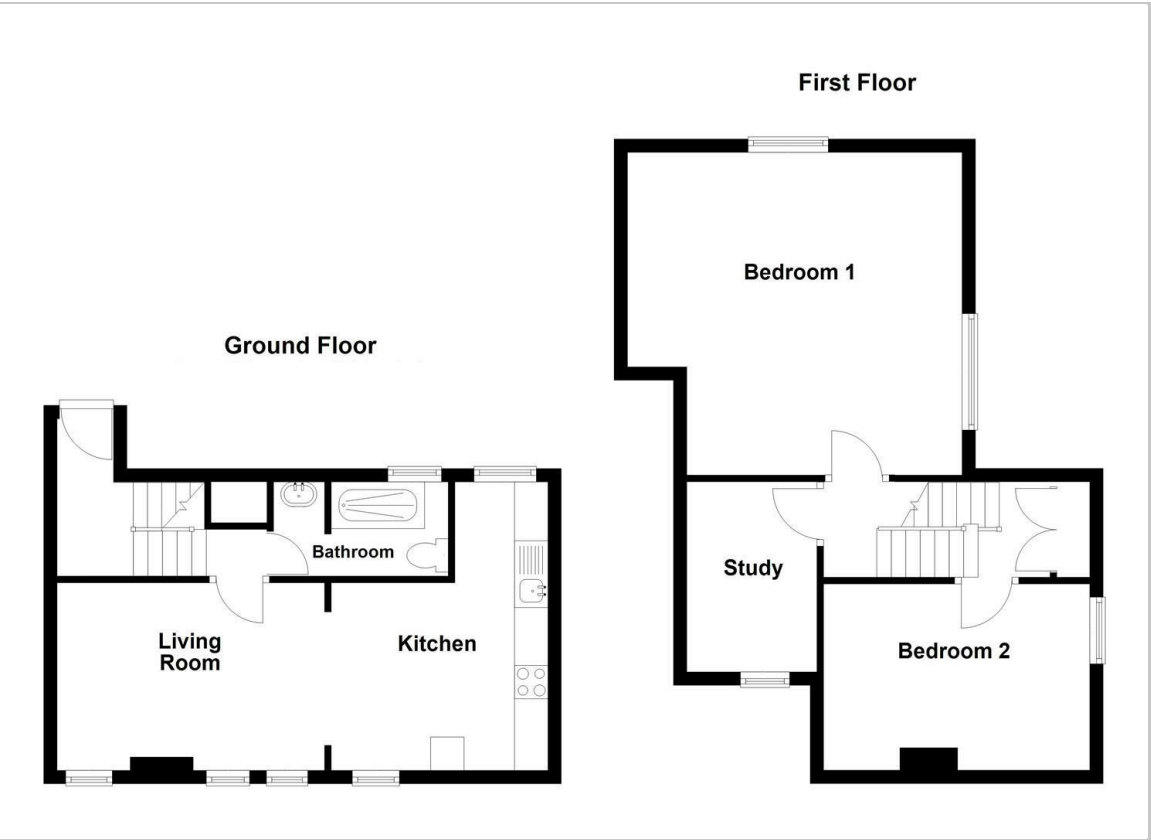
Completing the downstairs is the modern bathroom, with a generous

double length walk in shower, close coupled WC and wash hand basin sat upon a vanity unit. The bathroom has had marble effect tiling installed around the shower and basin, complementing the brand new flooring.

Upstairs the apartment boasts two well-proportioned bedrooms, as well as a bonus room/study. The main bedroom dominates most of the space on the top floor, with it's dual aspect the room is filled with warm sunlight in the morning. The second bedroom has ample space for a double bed and other bedroom furniture. The bonus room is ideal for those looking to have a home office, hobby area or even a walk in wardrobe.

For those with a vehicle, the property includes allocated parking to the rear of the building. Due to it's proximity to the town centre, it is perfect for those who wish to be close to the heart of Weymouth without being in the town centre itself. If you're a fan of travelling further a field, Weymouth station is less than a 10 minute walk away from the house.

This maisonette is not just a place to live; it is a home that offers comfort, style, and practicality. If you are looking for a modern living space in a picturesque setting, Freshford House is certainly worth considering.



Living Room
9'2" x 12'9" (2.81 x 3.90)

Kitchen
10'7" x 14'2" max (3.25 x 4.32 max)

Bedroom One
16'6" x 14'8" (reduced head height) (5.03 x 4.48 (reduced head height))

Bedroom Two
12'7" x 9'2" (reduced head height) (3.86 x 2.81 (reduced head height))

Study / Bonus Room
6'4" x 9'4" (reduced head height) (1.94 x 2.86 (reduced head height))

